



# Framework Plan of the IDP Review 2021/2022

Aligned with the Budget-OPMS-SDF-DGDP Reviews for 2021/2022 in 2020/2021

## **Contents**

<b>1. Introduction</b> .....	2
Abbreviations' Explanation.....	2
Contact details .....	2
<b>SUMMARY DIAGRAM AND FOREWORD</b> .....	3
a) Legislative requirements for drafting of a Framework Plan (MSA Section 27) (what and aim of FP).....	3
b) Legislative requirements for IDP review i.t.o. MSA (e.g. Sections 26, 28 and 34).....	4
<b>ALIGNMENT MECHANISM FOR THE IDP-BUDGET-OPMS-SDF (THE PROCESS)-DIAGRAM</b> .....	6
<b>SDF IMPLEMENTATION AND ALIGNMENT PROCESS</b> .....	8
<b>2. Determine procedures for DM/LM consultation and procedures for amendments to Framework Plan.</b> .....	11
<b>3. District Municipality consultation mechanism with other IDP stakeholders, such as Sector Departments.</b> .....	12
a) Vertical alignment (National, Provincial, Local spheres);.....	12
6.3 Provincial Level.....	12
6.4 Local Level .....	12
B) Cross border alignment (other Districts & Provinces).....	13
c) Type of alignment mechanisms:.....	13
<b>Conclusion</b> .....	13

## District Framework Plan

# 1. Introduction

### Abbreviations' Explanation

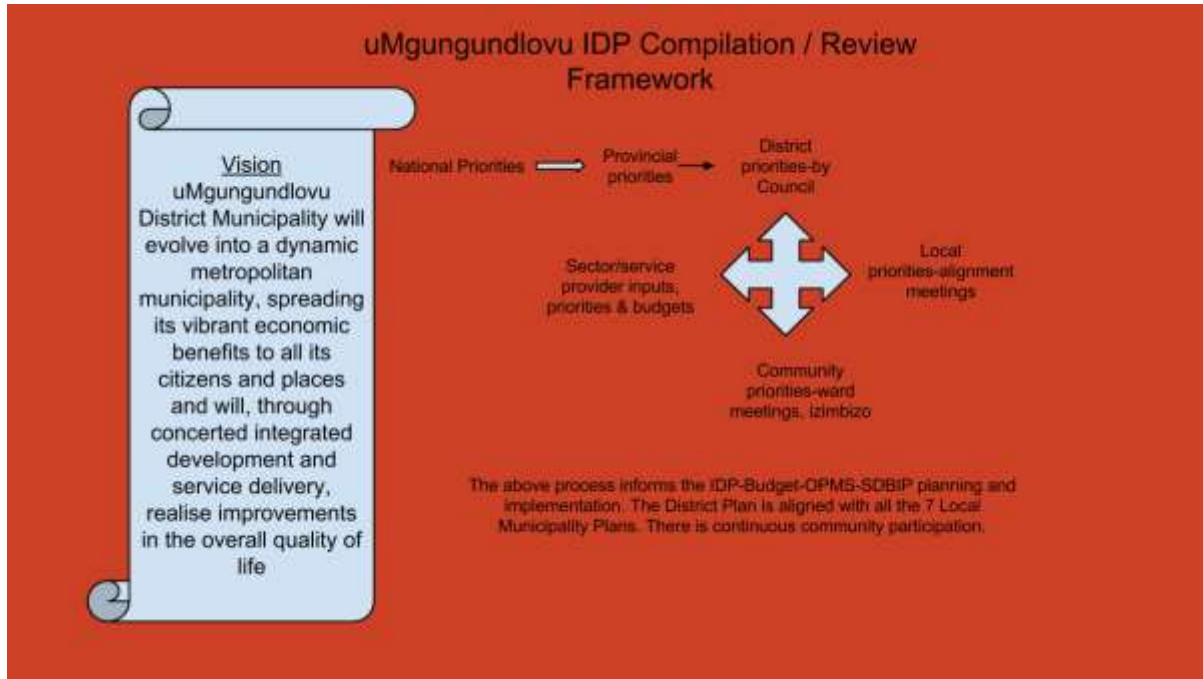
<b>IDP</b>	: Integrated Development Plan (product), Integrated Development Planning (process)
<b>MSA</b>	: Municipal Systems Act, 32 of 2000
<b>MFMA</b>	: Municipal Finance Management Act, 56 of 2003
<b>MStrA</b>	: Municipal Structures Act, 117 of 1998
<b>OPMS</b>	: Organizational Performance Management System
<b>SDF</b>	: Spatial Development Framework
<b>S54 Manager</b>	: Manager appointed in terms of Section 54 of the Municipal Systems Amendment Act, 2011 / the municipal manager
<b>S56 Manager</b>	: Manager appointed in terms of Section 54 of the Municipal Systems Amendment Act, 2011 /senior manager reporting to the municipal manager
<b>PDA</b>	: Planning and Development Act-KZN 2000 as Amended
<b>SPLUMA</b>	: Spatial Planning and Land-use Management Act, 16 of 2013
<b>NDP</b>	: National Development Plan /Vision 2030
<b>PGDP</b>	: Provincial Growth and Development Plan
<b>HOD</b>	: Head of Department
<b>M.E.C.</b>	: Member of the Executive Council /Provincial Cabinet
<b>CIF</b>	: Capital Investment Framework (usually 3 or 5 years)
<b>SoEs</b>	: State Owned Enterprises

### Contact details

IDP	: Mrs Phumzile Luswazi ( IDP Manager ) : <a href="mailto:Phumzile.Luswazi@umdm.gov.za">Phumzile.Luswazi@umdm.gov.za</a>
Budget	: Mrs Nondumiso Mbatha (Acting Chief Financial Officer): <a href="mailto:Nondumiso.Mbatha@umdm.gov.za">Nondumiso.Mbatha@umdm.gov.za</a>
OPMS	: Mrs Andile Shezi (Manager: Performance Management): <a href="mailto:Andile.Mpangase@umdm.gov.za">Andile.Mpangase@umdm.gov.za</a>
SDF	: Mrs Mandisa Khomo (Manager: Development Planning): <a href="mailto:Mandisa.Khomo@umdm.gov.za">Mandisa.Khomo@umdm.gov.za</a> : Mrs Phumzile Luswazi ( IDP Manager ) : <a href="mailto:Phumzile.Luswazi@umdm.gov.za">Phumzile.Luswazi@umdm.gov.za</a>
DGDP	: Mr Prince Fakude (Project Manager): <a href="mailto:Prince.fakude@umdm.gov.za">Prince.fakude@umdm.gov.za</a>
DDM	: Mr Prince Fakude (Project Manager): <a href="mailto:Prince.fakude@umdm.gov.za">Prince.fakude@umdm.gov.za</a>

Telephone: 033-897-6700, Fax: 033: 342-5502.

## SUMMARY DIAGRAM AND FOREWORD



**Figure 1 SUMMARY DIAGRAM AND FOREWORD**

Her Worship the Mayor supported by the Executive, Full Council and Management presents the IDP Review Framework Plan to guide the review of the IDP for 2021/2022, aligned with the Budget, OPMS, SDF, DDM and DGDP. This Framework Plan also guides the Local Municipalities:

The review of our fifth generation IDP will be guided by the aspirations of our communities and other inputs from International, Regionally, Nationally and Provincially. This will be the last review especially within the third year of implementing the IDP with its Ten Point Plan and Vision towards 2021. There will be a continuation of focus on the level of development of our citizens as the District Municipality has positioned itself as a citizen-centric, results driven and performance orientated. The revenue enhancement mechanisms will take centre stage among other imperatives. There is a strong sense of community participation and collaboration among all Municipalities that form the District Family.

- a) Legislative requirements for drafting of a Framework Plan (MSA Section 27) (what and aim of FP)
  - 1.1. The function of the Framework plan is to ensure that the process of the district IDP and local IDP's are mutually linked and can inform each other ensuring co-operative governance as contained in section 41 of the Constitution. The Framework must:
    - Identify the plans and planning requirements binding in terms of national and provincial legislation and identify those which were omitted in the IDP process.
    - Identify the matters to be included in the district and local IDP's that require alignment
    - Specify the principles to be applied and co-ordinate the approach to be adopted

- Determine procedures for consultation between the district municipality and the local municipalities
  - Determine the procedures to effect amendments to the Framework Plan
  - Incorporate comments from the MEC and those derived from Provincial Assessments.
  - The Framework Plan is a co-ordination tool for the district to ensure that interrelated parallel planning processes within the district are coordinated to obtain maximum benefit for the district as a whole.
- 1.2. Various processes within the IDP should be smoothly interlinked to ensure optimal effectiveness as well as ensure the agreement on joint timeframes that need to be reached between the various local municipalities and the district municipality.
  - 1.3. The District Municipality is in charge of the Framework Plan, which has to be agreed upon by all local municipalities and will be used by the local municipalities in finalising their Process Plans.
  - 1.4. The District Municipality will, through the District Technical Coordinating Committee (Municipal Manager's Forum), monitor the compliance of the actual IDP process of all municipalities with the Framework Plan. This will ensure that corrective action is undertaken in time if in case of failure to adhere to the Framework Plan and the timeframes contained therein.
  - 1.5. Each Local Municipality will, however, be responsible for monitoring its own process plan.
  - 1.6. The uMgungundlovu District Municipality (DC 22) consists of seven Category B Municipalities and a District Management Area (KZDMA22) under the direct primary jurisdiction of the uMgungundlovu District Municipality.

The seven Local Municipalities are:

- a. uMshwathi Municipality (KZ 221)
- b. uMngeni Municipality (KZ 222)
- c. Mpofana Municipality (KZ 223)
- d. Impendle Municipality (KZ 224)
- e. Msunduzi Municipality (KZ 225)
- f. Mkhambathini Municipality (KZ 226)
- g. Richmond Municipality (KZ 227)

Each municipality has to appoint an IDP Champion to steer the local IDP process within that municipality.

- b) Legislative requirements for IDP review i.t.o. MSA (e.g. Sections 26, 28 and 34).
  - 1.2.1. Section 25(1) of Municipal Systems Act, (Act 32) of 2000 directs that each municipal Council must, upon election adopt a single, inclusive and strategic plan which:

- a. links, integrates and co-ordinates plans;

- b. aligns the resources and capacity with the implementation of the plan;
- 1.2.2 26. Core components of integrated development plans —an integrated development plan must reflect—
- (a) The municipal Council's vision for the long-term development of the municipality with special emphasis on the municipality's most critical development an internal transformation needs;
  - (b) An assessment of the existing level of development in the municipality, which must include an identification of communities that do not have access to basic municipal services;
  - (c) The Council's development priorities and objectives for its elected term, including its local economic development aims and its internal transformation needs;
  - (d) The Council's development strategies which must be aligned with any national or provincial sectoral plans and planning requirements binding on the Municipality in terms of legislation;
  - (e) A spatial development framework, which must include the provision of basic guidelines for a land, use management system for the Municipality;
  - (f) The council's operational strategies;
  - (g) Applicable disaster management plans;
  - (h) A financial plan, which must include a budget projection for at least the next three years; and
  - (i) The key performance indicators and performance targets predetermined in terms of section 41.
- 1.2.4 On the basis of the agreed framework plan, Section 28 directs that each Municipal Council must adopt a process plan to guide the planning, drafting, adoption and reviewing of its integrated development plan.
- 1.2.5 Section 34 of the MSA states that: A Municipal Council -
- (a) must review its integrated development plan annually,
    - (i) In accordance with an assessment of its performance measurements in terms of section 4 i; and
    - (ii) To the extent that changing circumstances so demand; and may amend its integrated development plan in accordance with a prescribed process.

Consequently, the uMgungundlovu District Municipality, in pursuance of the above Constitutional and legislative directives, is thus presenting the following framework to guide process plans and, consequently the IDPs of both, the District itself and of the Local Municipalities within its area of jurisdiction. A meeting is scheduled for 24 July 2019 with the seven Local Municipalities to discuss and agree on the plan.

c) **Key matters in DM and LMs IDPs to be aligned, co-ordinated and integrated as a DM Family:**

- **New Council priorities:**

The District Municipality has adopted a Ten Point Plan to steer its strategic agenda in the five-year term of the IDP under review (2017-2021) that:

1. Metro (step by step roadmap to our common vision)
2. Universal access to services (100% access)
3. Maintenance plan (reliable provision of services)
4. Radical Economic Transformation (setting up of a functional Development Agency)
5. Community Partnerships (EPWP and Co-operatives)
6. Good Governance (obtaining a clean audit)
7. Sustainable IGR (a structured Mayors Forum)
8. Monitoring and evaluation (through the SDBIP's)
9. Special Programmes (for the vulnerable communities)
10. Achieving sustainable development and climate change mitigation

- **Outcomes based approach (Cabinet Lekgotla Resolutions, District Lekgotla Resolutions, OPMS, State of the Nation Address, State of the Province Address, Sustainable Development Goals (SDGs), PGDS, PGDP, DGDP, 14 National Outcomes, Back to Basics and Climate Change);**

All of the above aspects are already in the current IDP document and will be reviewed. Also the following:

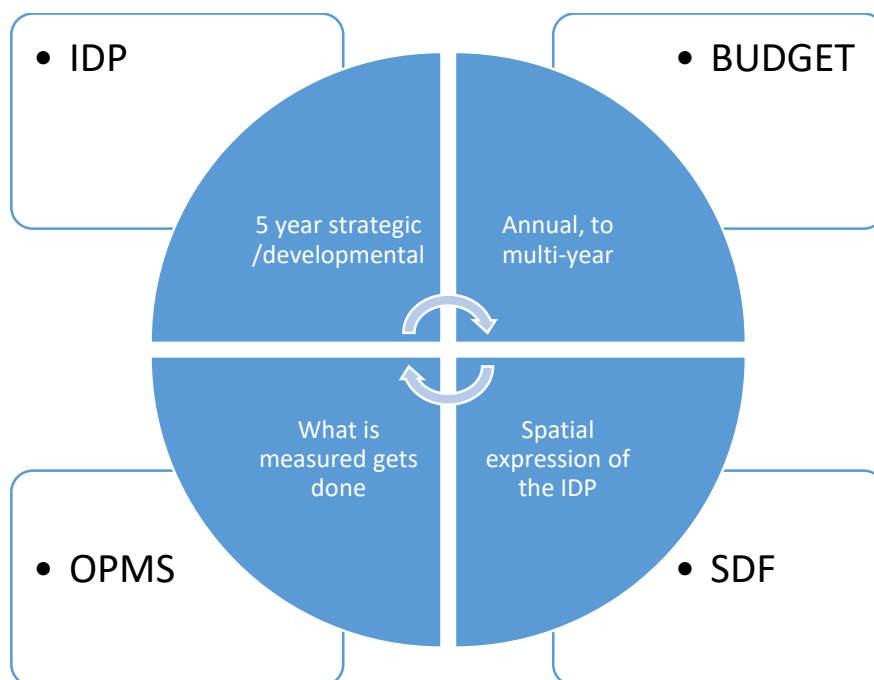
- **The Sukuma Sakhe/War on Poverty and War Rooms.:** part of the current IDP under review.
- **Reviewed Sector Plans**
- **The SDF, with Capital Investment Framework, to ensure that the IDP and SDF preparation processes are adequately aligned:** addressed here and as part of the thorough review.
- **Critical to this IDP Framework is aligning the DDM, DGDP, SDF processes and MSCOA.**

**ALIGNMENT MECHANISM FOR THE IDP-BUDGET-OPMS-SDF (THE PROCESS)-DIAGRAM**

**Table 1 alignment mechanism**

No.	IDP	BUDGET	OPMS	SDF
1.	All phases And identification of needs	All phases And identification of needs	Setting of predetermined objectives and performance targets	Data collection and analysis
2.	Projects identification	Allocation of funding and a three-five year implementation plan	Allocation of roles and responsibilities	Spatial location of projects

No.	IDP	BUDGET	OPMS	SDF
3.	Ensure integration	Ensure alignment with Policies	Ensure compliance	Planning according to norms and standards and Legislation
4.	Approval: by Council	Approval: by Council	Approval: by Council	Approval: by Council
5.	Monitoring & Evaluation-monthly and Quarterly	Monthly and Quarterly reviews	Monthly and Quarterly reviews	Regular update of information and record keeping on new information, using GIS.
AN ALIGNED PROCESS THAT IS CONCURRENTLY BEING PLANNED, IMPLEMENTED, REVIEWED, MONITORED AND EVALUATED ON AN ANNUAL BASIS FOR THE NEXT FIVE YEARS.				



- **SPLUMA implementation requirements.**  
Covered in the SDF review process as outlined here.



## SDF IMPLEMENTATION AND ALIGNMENT PROCESS

### “INTRODUCTION

SPLUMA notes the following implementation plan requirements:

*(p) Include an implementation plan comprising of—*

*(i) Sectoral requirements, including budgets and resources for implementation;*

*(ii) Necessary amendments to a land use scheme;*

*(iii) Specification of institutional arrangements necessary for implementation;*

*(iv) Specification of implementation targets, including dates and monitoring indicators; and*

*(v) Specification, where necessary, of any arrangements for partnerships in the implementation process.*

THE SDF implementation and alignment process as follows:

### THE DISTRICT CAPITAL INVESTMENTS FRAMEWORK

The District secured funding for preparation of a District Capital Investment Framework. A current list of Capital Investment projects is reflected in the current IDP of the District Municipality and reflected in the Annexures of the SDF. Capital Investment Projects of Umgeni Water are also reflected in the IDP and CIF.

#### The strategic spatial projects

The Strategic Spatial Projects identified through the planning process to be focused on by the Spatial Planning component of the uMgungundlovu District in the short to medium term are reflected in the table overleaf. It is noted that the majority of these projects / initiatives are not funded as yet and the focus in the short term will be on securing funding and initiating these projects in cooperation with the relevant local municipalities.

### SDF FUNDING

UMgungundlovu District Municipality has received funding from the Department of Cooperative Governance and Traditional Affairs(COGTA) for the review of the Spatial Development Framework (SDF). The reviewed Capital Investment Framework is based on the 2015 SDF

**Table 2 PRELIMINARY LIST OF STRATEGIC SPATIAL PROJECTS / INITIATIVES**

<b>N O</b>	<b>INTERVENTION / PROJECT</b>	<b>PROJECT TYPE</b>	<b>RESPONSIBILITY</b>	<b>PRIORITY</b>
	<b>MOVEMENT SYSTEMS</b>			
1	Concept Plan for Alternative East-West Development Corridor	Planning	uMDM	Short Term
2	Regional Access Route Maintenance	Maintenance	DoT	Ongoing
3	Rural Road Access Upgrade to KwaSwayimana (uMshwathi)	Implementation	DoT	Short Term
4	Rural Road Access Upgrade to Vumukwenza or Embo Timuni (Richmond)	Implementation	DoT	Medium Term
	<b>ENVIRONMENTAL RESOURCES</b>			
1	Develop Clear Guidelines for Land Use Management in terms of Environmental Control Zones	Planning	uMDM	Short Term
2	Prepare Reserve Management Plans for priority Water Quality Control Zones	Planning	DWA / Umgeni Water	Medium Term
	<b>AGRICULTURAL RESOURCES</b>			
1	Establish Urban Edges for All Development Nodes	Planning	Local Municipalities	Short Term
2	Support Intensification and Diversification of Agriculture in Identified Areas	Implementation	DAEARD	Medium Term
	<b>NODAL DEVELOPMENT</b>			
1	Strategy for "New Town" (Service Centre) Development	Planning	uMDM	Short Term
2	Implement Pilot "New Town" (Service Centre) Development: Vulindlela	Implementation	Msunduzi Municipality	Medium Term
3	Implement Pilot "New Town" (Service Centre) Development: KwaSwayimani	Implementation	uMshwathi Municipality	Medium Term
4	Development of Appelsbosch / Bamshela Node	Implementation	uMshwathi Municipality	Medium Term
	<b>CORRIDOR DEVELOPMENT</b>			

<b>N O</b>	<b>INTERVENTION / PROJECT</b>	<b>PROJECT TYPE</b>	<b>RESPONSIBILITY</b>	<b>PRIORITY</b>
1	N3 Corridor Development Plan	Planning	SIP2	Underway
2	N3 Corridor Interchange Development Plans (Priority Intersections identified by Corridor Plan) -	Planning	Local Municipalities	Medium Term
	<b>INFRASTRUCTURE AND HOUSING DEVELOPMENT</b>			
1	Housing and Infrastructure Plans for Priority Areas	Planning	District / Local Municipalities	Short Term

## **ORGANIZATIONAL / INSTITUTIONAL ARRANGEMENTS**

### **CURRENT ARRANGEMENTS**

At present the Spatial Planning function located in the District is responsible for District wide coordination of strategic spatial planning. The Spatial Planning Unit is then also, with the various local municipalities that participated in the planning process, the champion of the District Spatial Development Framework.

The District Development Planning Shared Services currently provides Development Planning and GIS support to all the Municipalities in the District, excluding Msunduzi. The Development Planning component is dealt with by a senior professional providing support to all the Municipalities.

The GIS support function, linked to the District Planning Shared Services, is split between two staff members located in the District supporting Mkhambathini, uMshwathi and Richmond Municipalities and two staff members located at the uMngeni Municipality responsible for uMngeni, Mpofana and Impendle.

### **FUTURE ARRANGEMENTS**

With the anticipated added responsibilities of Municipalities in terms of SPLUMA, specifically relating to the Development Planning function, it has been recommended that the Development Planning function of the Shared Service, currently located at uMngeni, be located at the District. The District Planning Cluster proposed the following capacity requirements for the Planning Shared Service to be based at the District:

Chief Planner and Assistant Planner. "(Taken from the uMDM: SDF)

Furthermore, the SDF implementation takes note of the following recent studies in our District:

- Public Capital Investment and Settlement Growth.
- Geotechnical Analysis.
- Spatial Planning guideline for promoting local income circulation.
- Defining limits on settlement expansion: The issue of "Urban Edge".

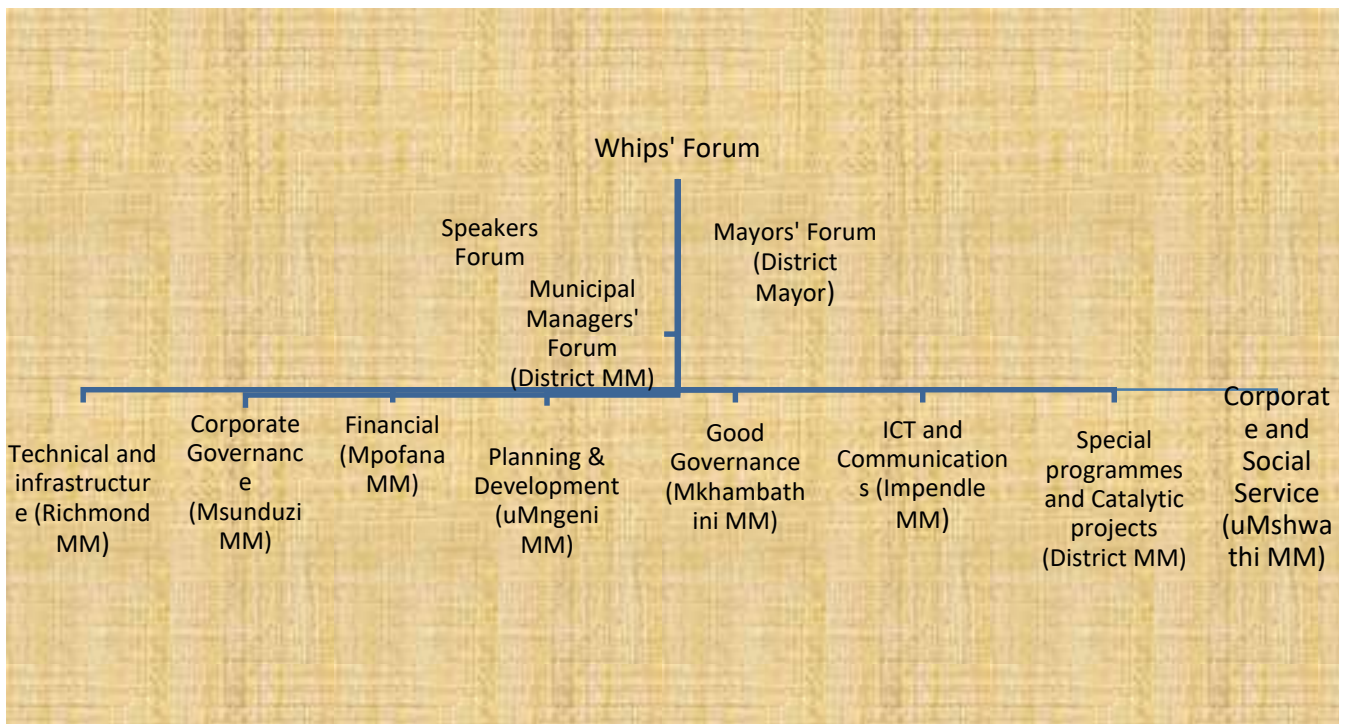
- Integration of Agro-Hydrological issues into Municipal Spatial Planning within KwaZulu-Natal
- Maloti (Ukhahlamba) Drakensberg Park World Heritage Site Corridor Framework Plan.
- A Landscape Characterisation study: an initiative identified by COGTA but commissioned by Ezemvelo KZN Wildlife.

## 2. Determine procedures for DM/LM consultation and procedures for amendments to Framework Plan.

### a) Horizontal alignment (within the District family via Framework Plan).

As recorded in the Process Plan, there are planned meetings of the IDP Sub-Cluster / Planners Forums to take place between the District Family Planners. The IGR Structure depicted below is the overall structure for “horizontal alignment” with the District:

### b) Type of alignment mechanisms:



- Planning & Development Forums; and

As per the above-mentioned structure the uMngeni Municipality’s MM is the convener of the Planning and Development Cluster that have sub-clusters: IDP, Spatial/statutory, L.E.D./DGDP as its sub-committees. The meetings of the IDP sub-cluster are depicted in the Process Plan.

- **Representative Forums**

The District will host at least three IDP Representative Forum meetings during 2020/2021. The District will participate in the IDP of the Local Municipalities. There will also be a stakeholders' forum, which will be the fourth meeting. Forums of all its LMs and also host izimbizo. The dates of these meetings will be reflected in the Process Plan.

### **3. District Municipality consultation mechanism with other IDP stakeholders, such as Sector Departments.**

a) Vertical alignment (National, Provincial, Local spheres);

The National sphere has provided a national framework and guidelines for sectoral, provincial and municipal planning. This contributes to the creation of a normative framework consisting of common policy guidelines and principles, general strategic guidelines regarding sectoral strategies and spatial macro-strategies.

The national spheres should also co-ordinate and prioritise programmes and budgets between sectors and the national sphere in line with the national framework and in particular the National Spatial Development Perspective (NSDP)-National Development Plan (NDP), the State of the Nation Address as well as the 2020 targets and beyond.

#### 6.3 Provincial Level

At this level, there are specific frameworks with mid-term objectives and targets for public investment and services as well as a spatial macro-framework for all sectors and municipalities. Sectoral programmes and District programmes also need to be coordinated and aligned. Provincial level is best positioned to facilitate this. Municipalities are urged to be pro-active in soliciting this assistance. Important among policy directives are the following:

- Priorities set by the Premiers State of the Province Address
- Priorities set out in the Provincial Growth and Development Strategy (PGDS) and PGDP. Provincial Spatial Economic Development Perspective

#### 6.4 Local Level

Municipalities have to prepare a 5-year IDP. Interaction between the District and Local Municipalities is essential. The Framework Plan for the District must address the alignment.

The Municipal Manager must, with the support of the IDP Manager / Coordinator and the IDP Steering Committee, ensure that all role players are performing their duties. Performance will be monitored at all the meetings. Organisational restructuring should be provided for interdisciplinary teams around each Key Performance Area.

b) Cross border alignment (other Districts & Provinces).

Cross-border alignment will be attained through the Provincial Planners Forum and the alignment sessions. Furthermore, the IGR structures will also be utilized.

c) Type of alignment mechanisms:

- Representative Forums: meetings of the IDP RF are detailed on the Process Plan, meetings will be per IDP Phase.

**One-on-one Sector Department meetings.**

There will be one-on-one meetings for the purposes of information exchanges during the months of November and December.

## **Conclusion**

The District Planners met on 14 July 2020 to agree on the draft Framework Plan and Process Plan. Secondly, the District Executive Committee will endorse the draft plans to be advertised for public comment prior to adoption by Council. The drafts will be on advert and will be concluded after comments have been received from stakeholders including CoGTA. The detailed action programme with dates of milestones and events is in the Process Plan.